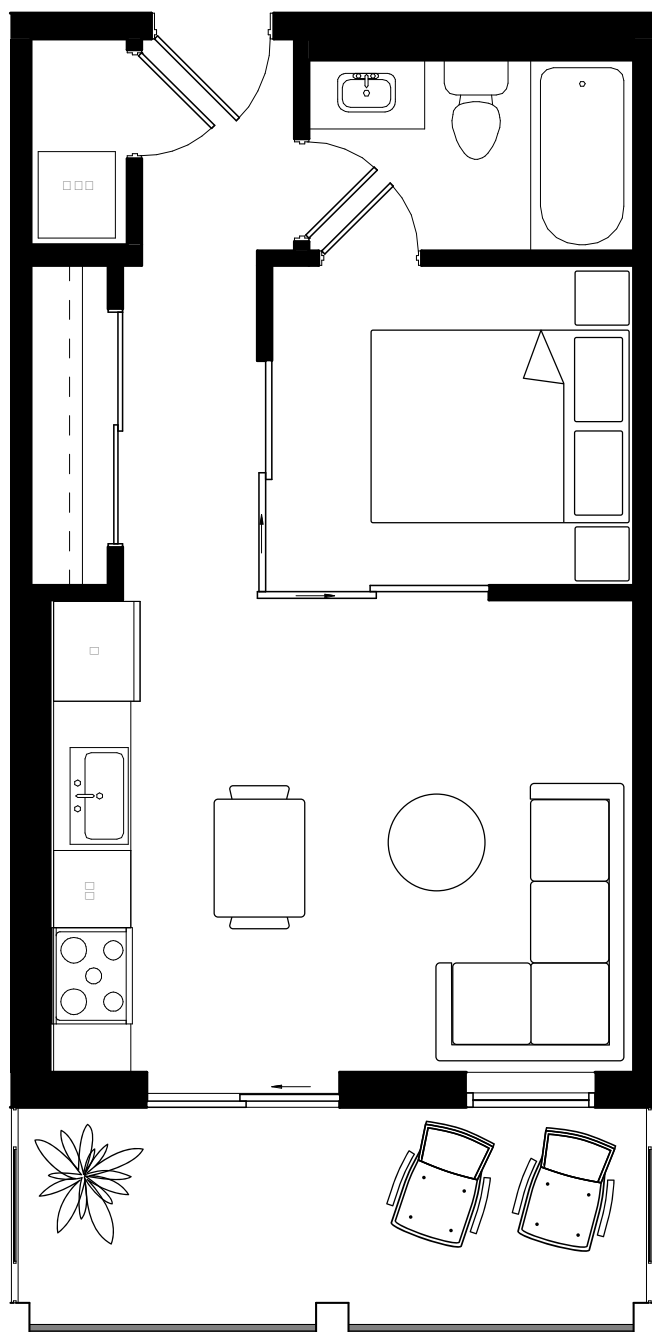


SAVOY

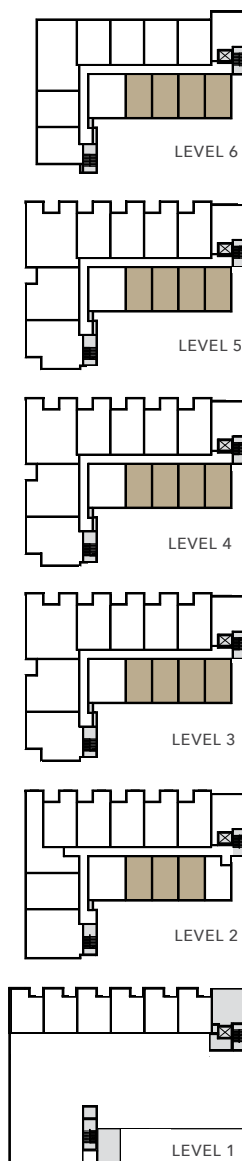
ON CLEMENT

PLAN A1

JR. 1 BED | 1 BATH
INTERIOR: 450 SF
EXTERIOR: 98 SF



CLEMENT AVE



LIVESAVOY.CA

✉ info@livesavoy.ca

Presentation Centre: Unit 101 - 620 Coronation Ave, Kelowna

FIFTH AVE
PROPERTIES

ace Project
Marketing
Group



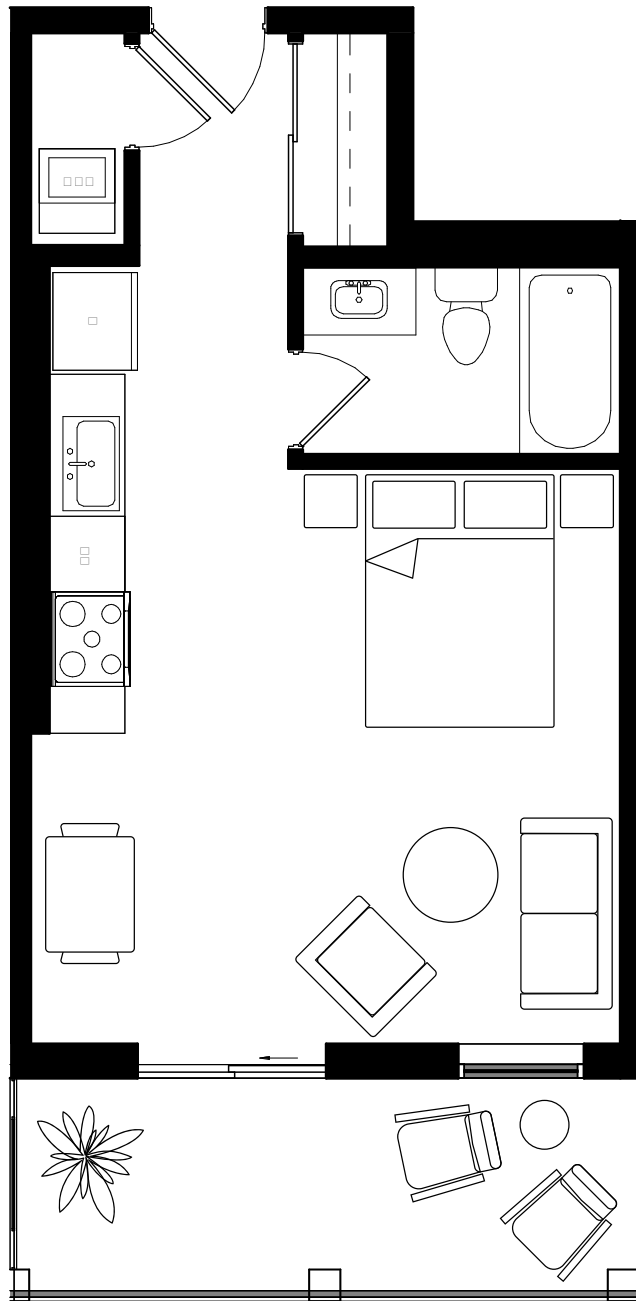
E. & O. E. This is not an offering for sale. Any such offering may only be made with a Disclosure Statement. The developer reserves the right to modify or change plans, specifications, features, materials and prices without notice and at the developer's sole discretion. While we strive for accuracy, all measurements are approximate and are based on the architectural plans. Renderings are conceptual and are intended as a general reference only.

SAVOY

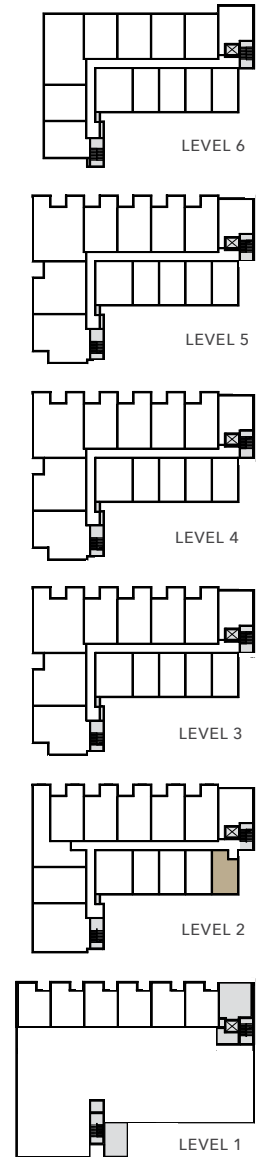
ON CLEMENT

PLAN A2

JR. 1 BED | 1 BATH
INTERIOR: 415 SF
EXTERIOR: 98 SF



CLEMENT AVE



LIVESAVOY.CA

✉ info@livesavoy.ca

Presentation Centre: Unit 101 - 620 Coronation Ave, Kelowna

FIFTH AVE
PROPERTIES

ace Project
Marketing
Group



E. & O. E. This is not an offering for sale. Any such offering may only be made with a Disclosure Statement. The developer reserves the right to modify or change plans, specifications, features, materials and prices without notice and at the developer's sole discretion. While we strive for accuracy, all measurements are approximate and are based on the architectural plans. Renderings are conceptual and are intended as a general reference only.

SAVOY

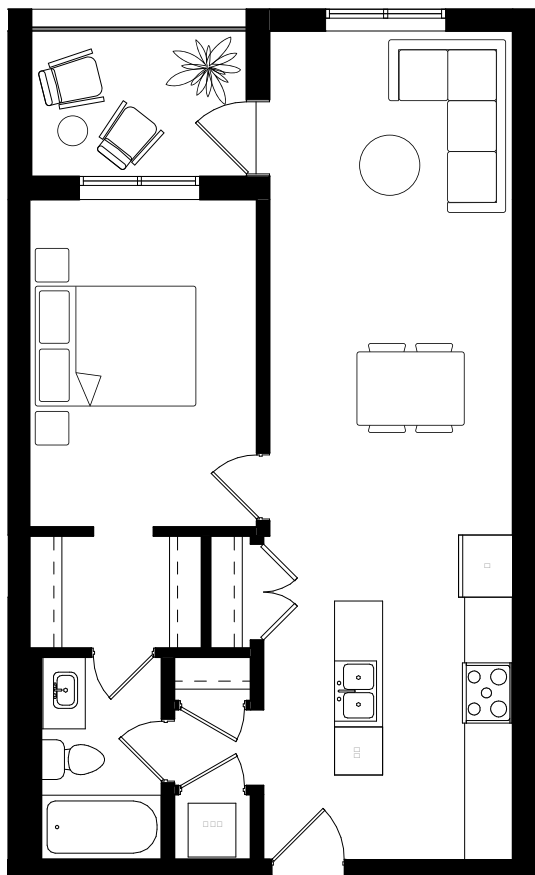
ON CLEMENT

PLAN B1

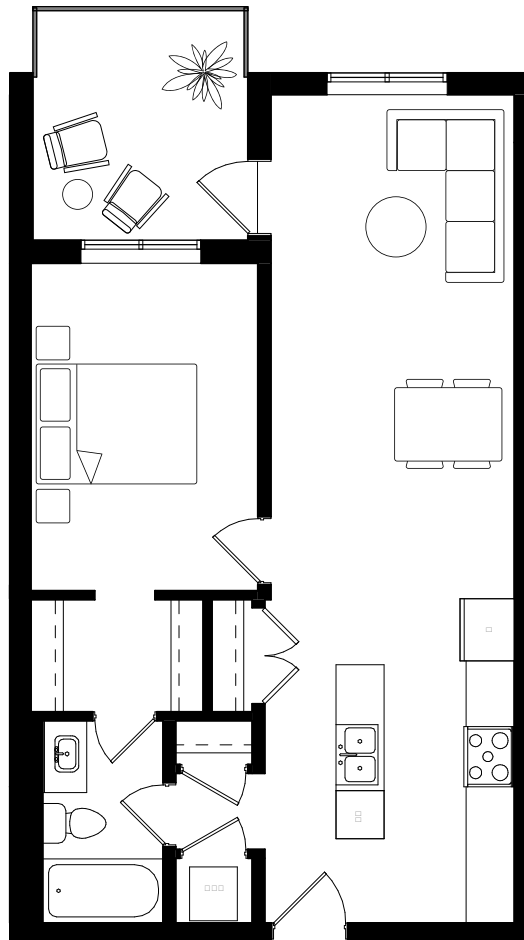
1 BED | 1 BATH

INTERIOR: 660 SF

EXTERIOR B1A: 57 SF / B1B: 87 SF

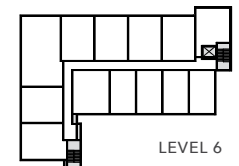


OPTION A



OPTION B

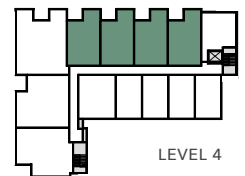
CLEMENT AVE



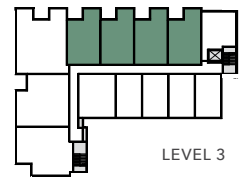
LEVEL 6



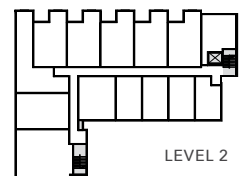
LEVEL 5



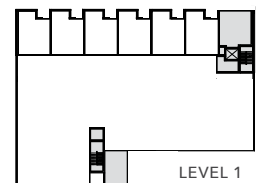
LEVEL 4



LEVEL 3



LEVEL 2



LEVEL 1

LIVESAVOY.CA

✉ info@livesavoy.ca

Presentation Centre: Unit 101 - 620 Coronation Ave, Kelowna

FIFTH AVE
PROPERTIES

ace Project
Marketing
Group



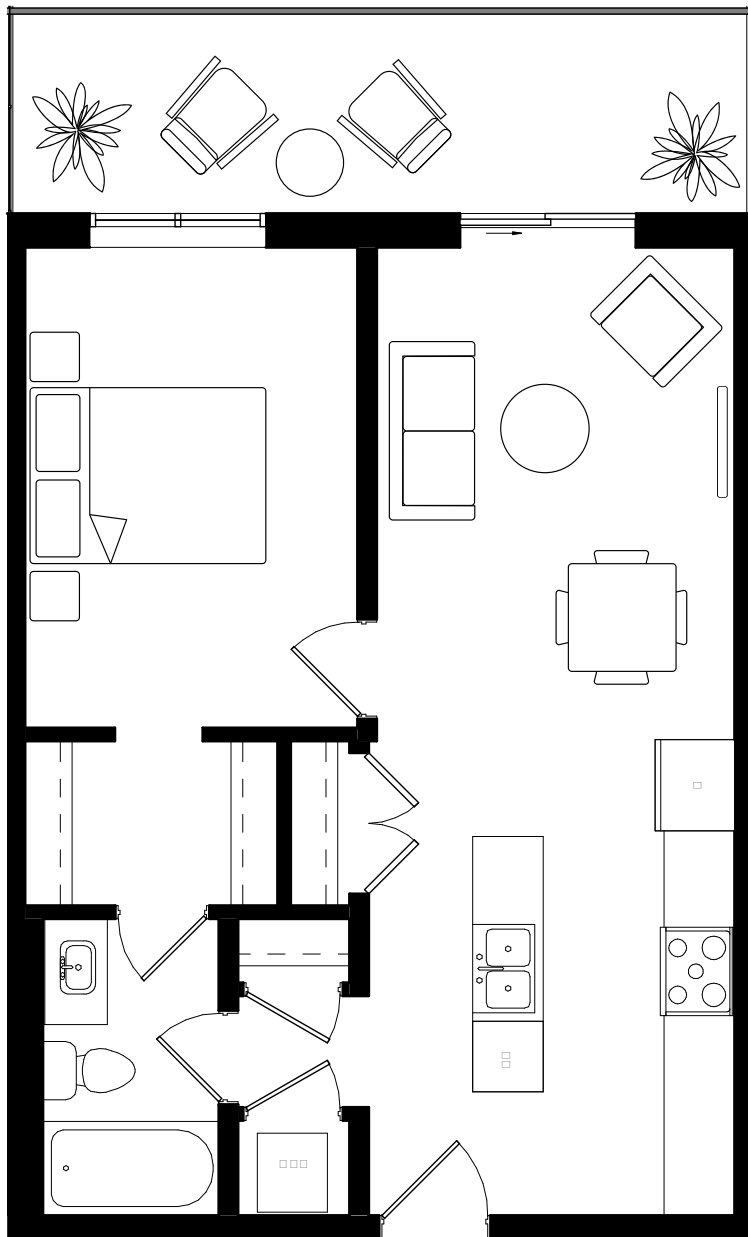
E. & O. E. This is not an offering for sale. Any such offering may only be made with a Disclosure Statement. The developer reserves the right to modify or change plans, specifications, features, materials and prices without notice and at the developer's sole discretion. While we strive for accuracy, all measurements are approximate and are based on the architectural plans. Renderings are conceptual and are intended as a general reference only.

SAVOY

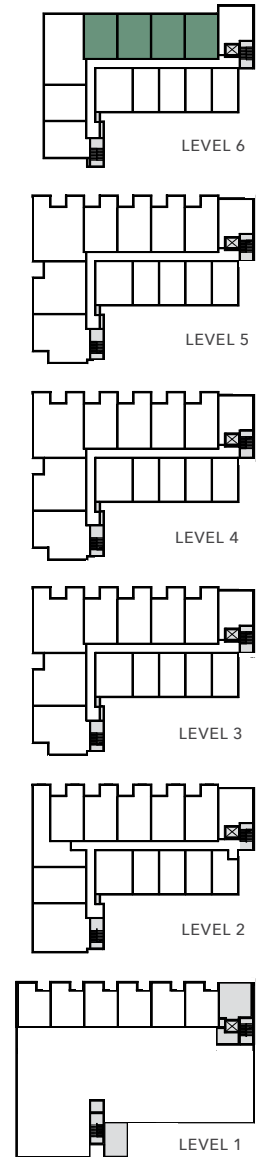
ON CLEMENT

PLAN B2

1 BED | 1 BATH
 INTERIOR: 595 SF
 EXTERIOR: 125 SF



CLEMENT AVE



LIVESAVOY.CA

✉ info@livesavoy.ca

Presentation Centre: Unit 101 - 620 Coronation Ave, Kelowna

FIFTH AVE
 PROPERTIES

ace Project
 Marketing
 Group



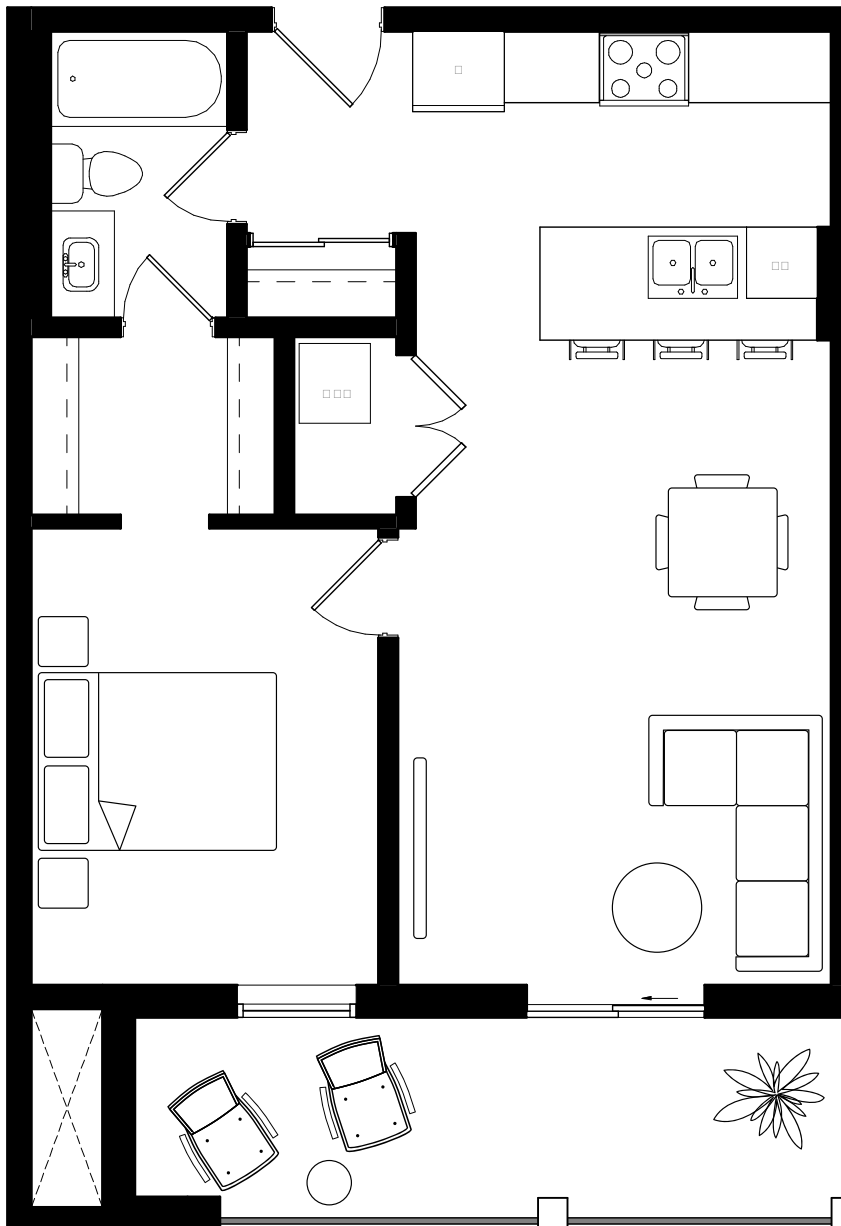
E. & O. E. This is not an offering for sale. Any such offering may only be made with a Disclosure Statement. The developer reserves the right to modify or change plans, specifications, features, materials and prices without notice and at the developer's sole discretion. While we strive for accuracy, all measurements are approximate and are based on the architectural plans. Renderings are conceptual and are intended as a general reference only.

SAVOY

ON CLEMENT

PLAN B3

1 BED | 1 BATH
 INTERIOR: 635 SF
 EXTERIOR: 114 SF



CLEMENT AVE



LIVESAVOY.CA

✉ info@livesavoy.ca

Presentation Centre: Unit 101 - 620 Coronation Ave, Kelowna

FIFTH AVE
 PROPERTIES

ace Project
 Marketing
 Group



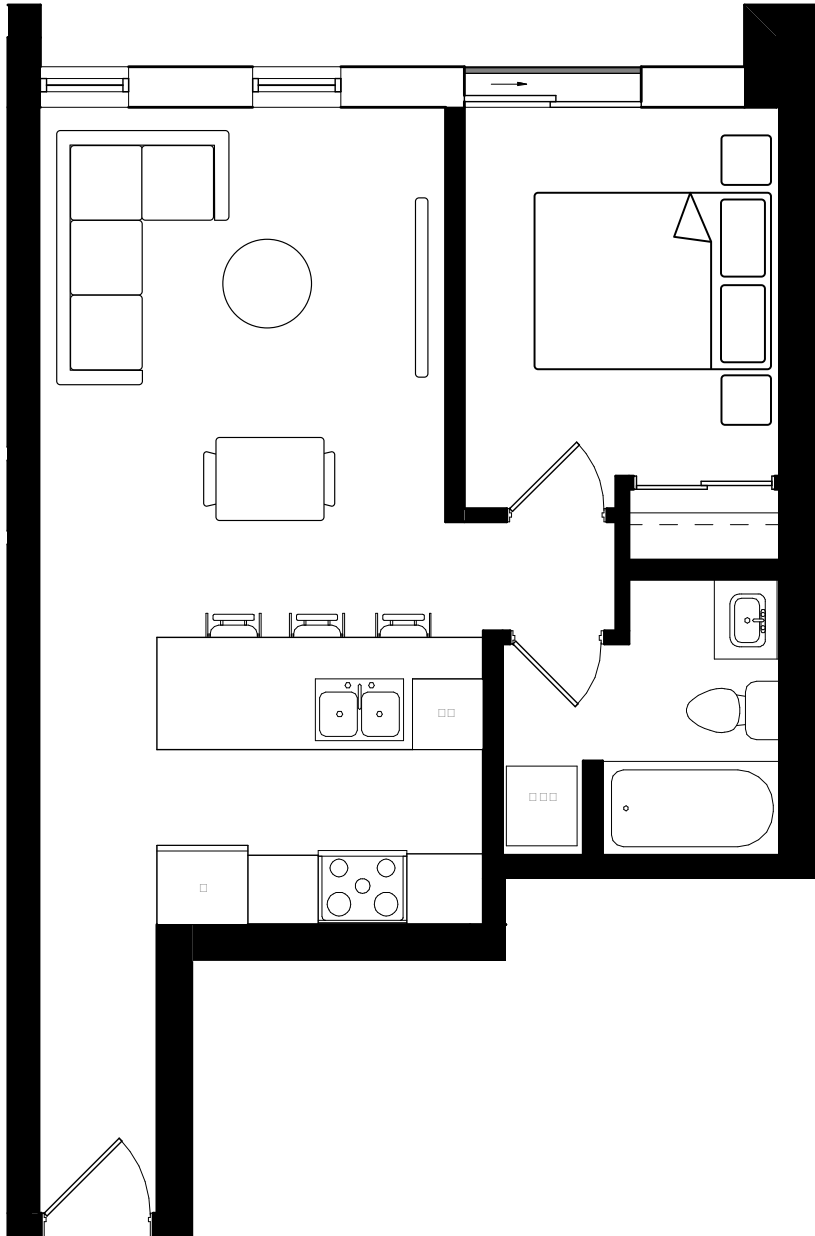
E. & O. E. This is not an offering for sale. Any such offering may only be made with a Disclosure Statement. The developer reserves the right to modify or change plans, specifications, features, materials and prices without notice and at the developer's sole discretion. While we strive for accuracy, all measurements are approximate and are based on the architectural plans. Renderings are conceptual and are intended as a general reference only.

SAVOY

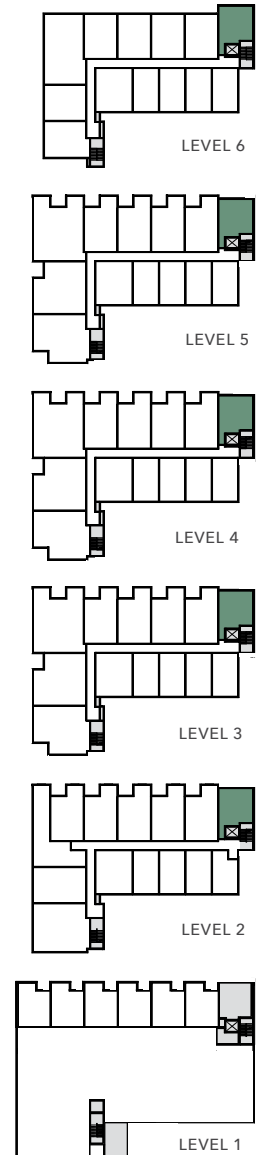
ON CLEMENT

PLAN B4

1 BED | 1 BATH
INTERIOR: 545 SF



CLEMENT AVE



LIVESAVOY.CA

✉ info@livesavoy.ca

Presentation Centre: Unit 101 - 620 Coronation Ave, Kelowna

FIFTH AVE
PROPERTIES

ace Project
Marketing
Group



E. & O. E. This is not an offering for sale. Any such offering may only be made with a Disclosure Statement. The developer reserves the right to modify or change plans, specifications, features, materials and prices without notice and at the developer's sole discretion. While we strive for accuracy, all measurements are approximate and are based on the architectural plans. Renderings are conceptual and are intended as a general reference only.

SAVOY

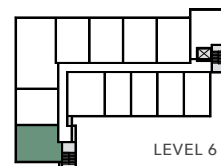
ON CLEMENT

PLAN B5

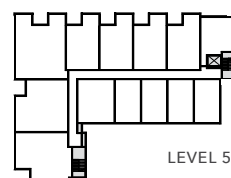
1 BED | 1 BATH
 INTERIOR: 633 SF
 EXTERIOR: 354 SF



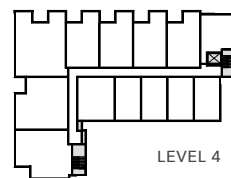
CLEMENT AVE



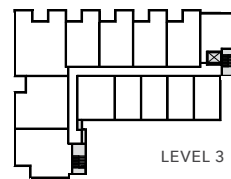
LEVEL 6



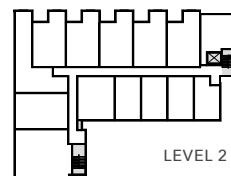
LEVEL 5



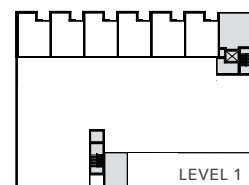
LEVEL 4



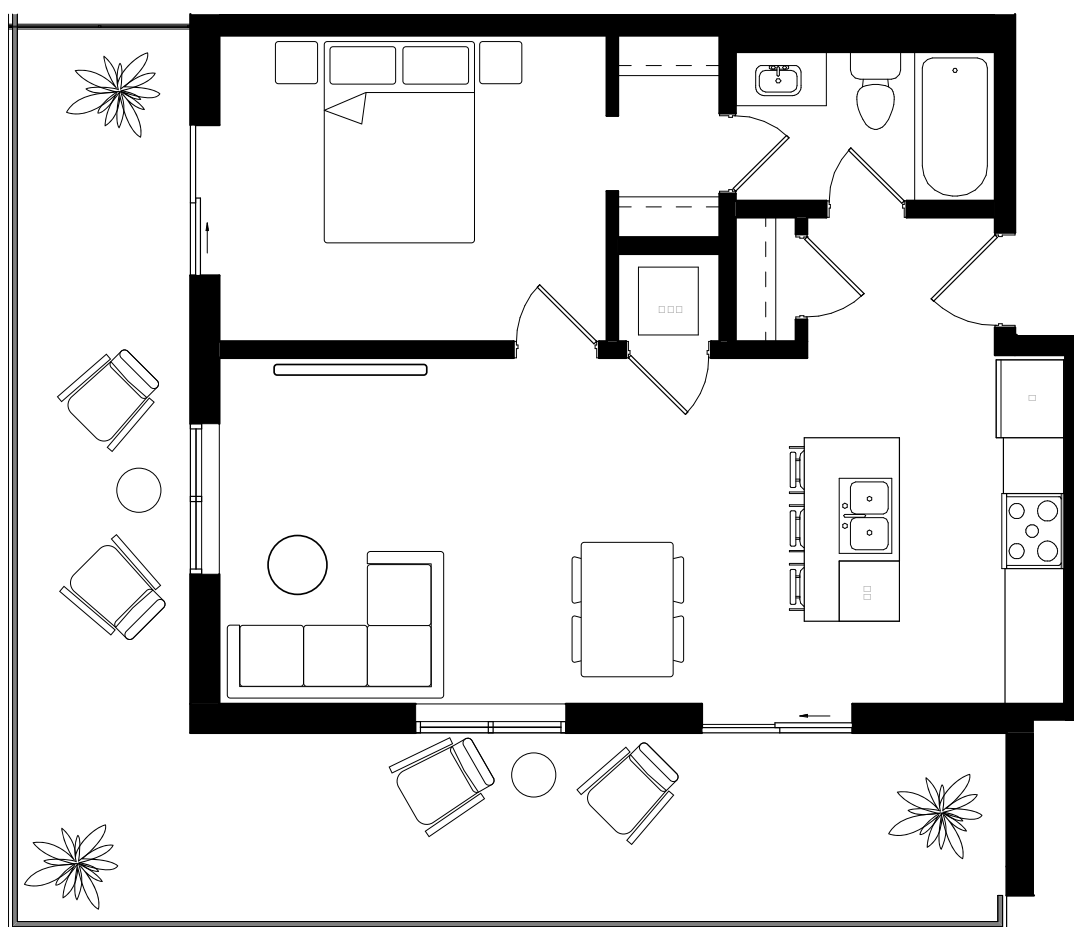
LEVEL 3



LEVEL 2



LEVEL 1



LIVESAVOY.CA

✉ info@livesavoy.ca

Presentation Centre: Unit 101 - 620 Coronation Ave, Kelowna

FIFTH AVE
 PROPERTIES

ace Project
 Marketing
 Group



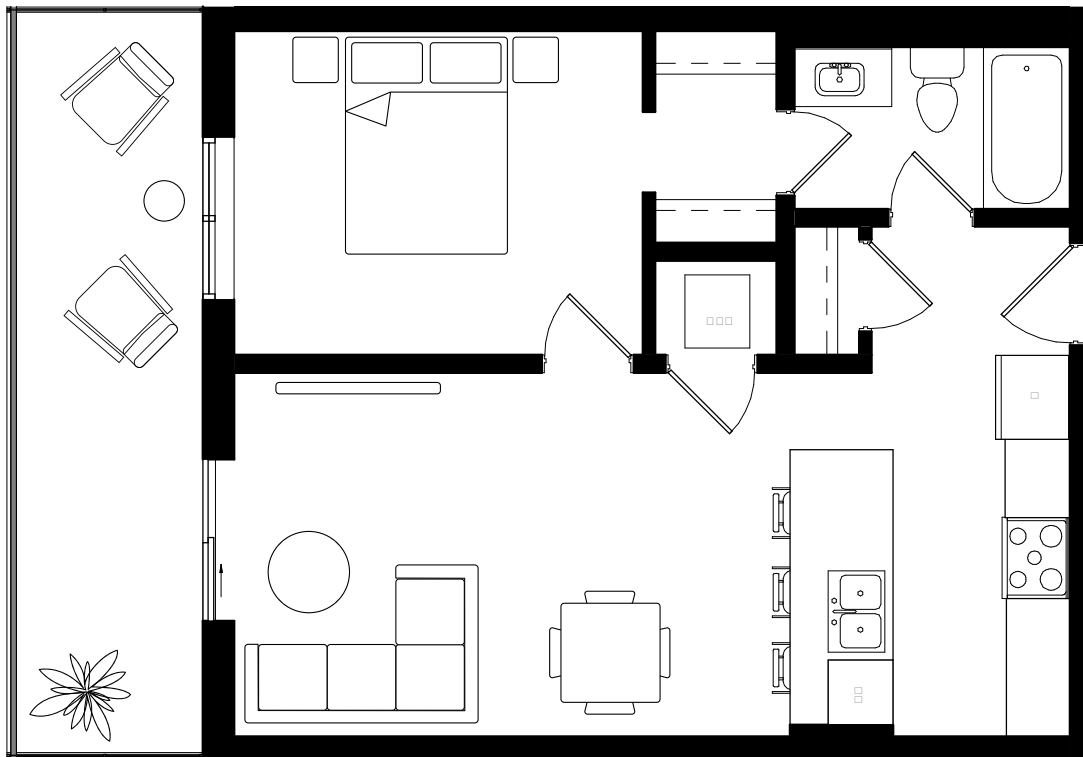
E. & O. E. This is not an offering for sale. Any such offering may only be made with a Disclosure Statement. The developer reserves the right to modify or change plans, specifications, features, materials and prices without notice and at the developer's sole discretion. While we strive for accuracy, all measurements are approximate and are based on the architectural plans. Renderings are conceptual and are intended as a general reference only.

SAVOY

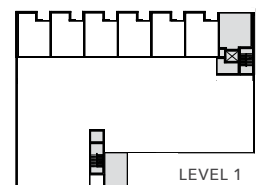
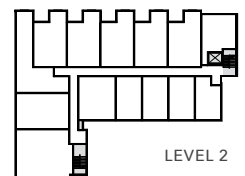
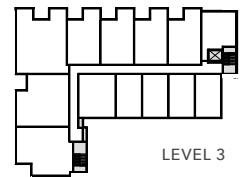
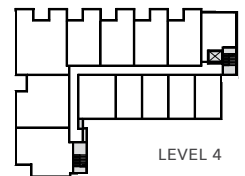
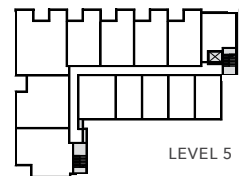
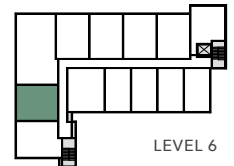
ON CLEMENT

PLAN B6

1 BED | 1 BATH
 INTERIOR: 595 SF
 EXTERIOR: 137 SF



CLEMENT AVE



LIVESAVOY.CA

✉ info@livesavoy.ca

Presentation Centre: Unit 101 - 620 Coronation Ave, Kelowna

FIFTH AVE
PROPERTIES

ace Project
Marketing
Group



E. & O. E. This is not an offering for sale. Any such offering may only be made with a Disclosure Statement. The developer reserves the right to modify or change plans, specifications, features, materials and prices without notice and at the developer's sole discretion. While we strive for accuracy, all measurements are approximate and are based on the architectural plans. Renderings are conceptual and are intended as a general reference only.

SAVOY

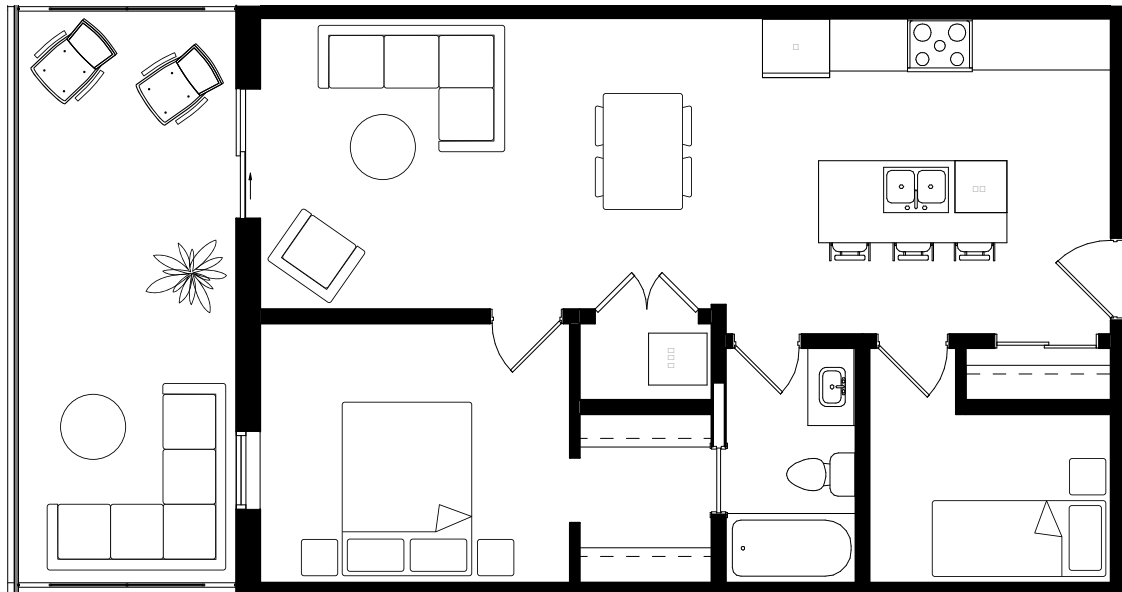
ON CLEMENT

PLAN C1

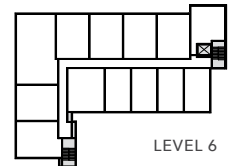
1 BED + DEN | 1 BATH

INTERIOR: 760 SF

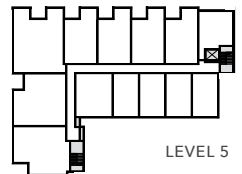
EXTERIOR: 191 SF



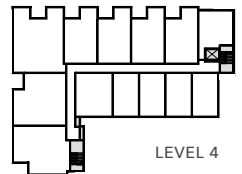
CLEMENT AVE



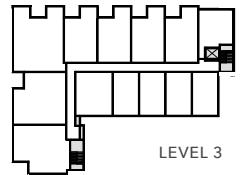
LEVEL 6



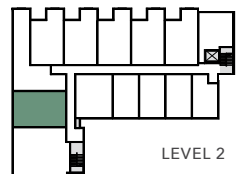
LEVEL 5



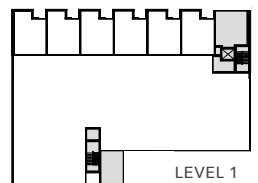
LEVEL 4



LEVEL 3



LEVEL 2



LEVEL 1

LIVESAVOY.CA

✉ info@livesavoy.ca

Presentation Centre: Unit 101 - 620 Coronation Ave, Kelowna

FIFTH AVE
PROPERTIES

ace Project
Marketing
Group



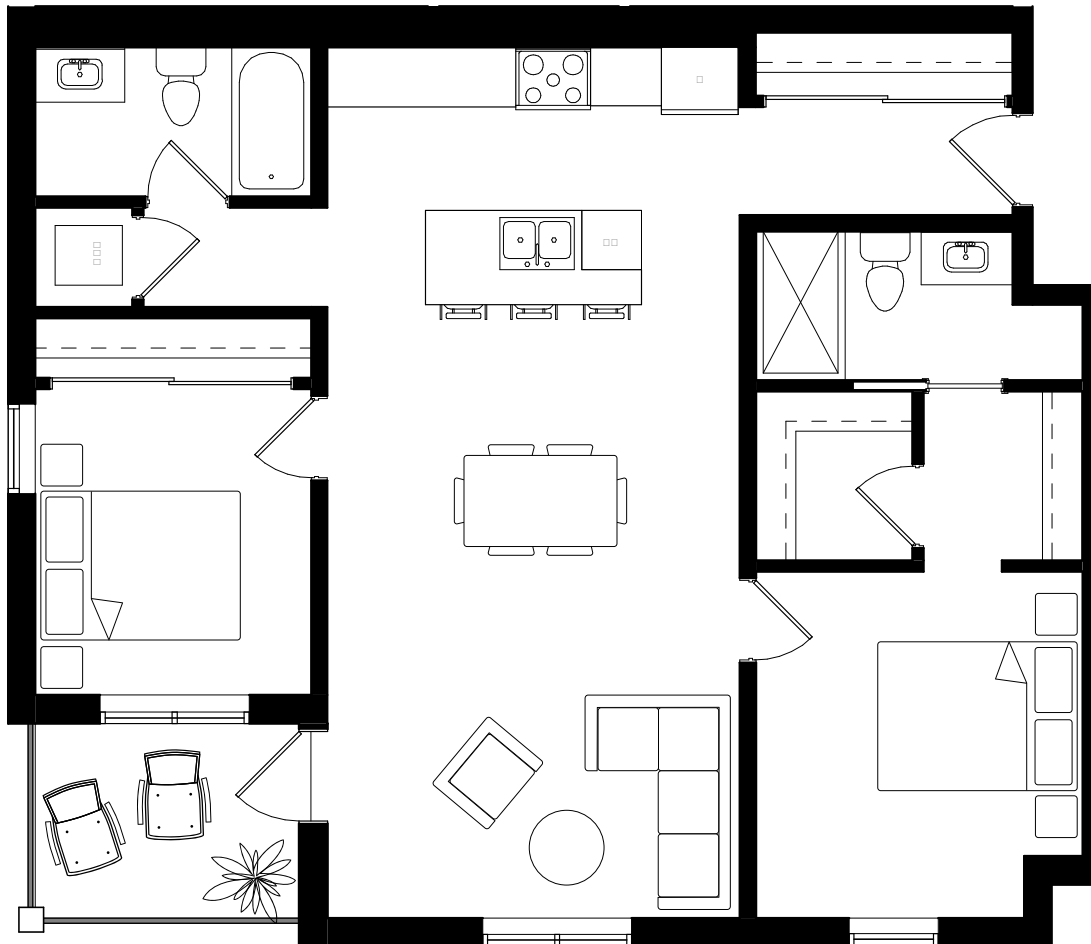
E. & O. E. This is not an offering for sale. Any such offering may only be made with a Disclosure Statement. The developer reserves the right to modify or change plans, specifications, features, materials and prices without notice and at the developer's sole discretion. While we strive for accuracy, all measurements are approximate and are based on the architectural plans. Renderings are conceptual and are intended as a general reference only.

SAVOY

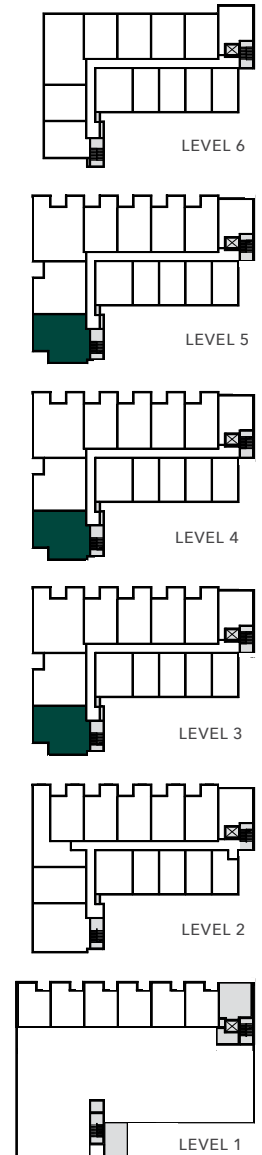
ON CLEMENT

PLAN D1

2 BED | 2 BATH
 INTERIOR: 985 SF
 EXTERIOR: 61 SF



CLEMENT AVE



LIVESAVOY.CA

✉ info@livesavoy.ca

Presentation Centre: Unit 101 - 620 Coronation Ave, Kelowna

FIFTH AVE
PROPERTIES

ace Project
Marketing
Group



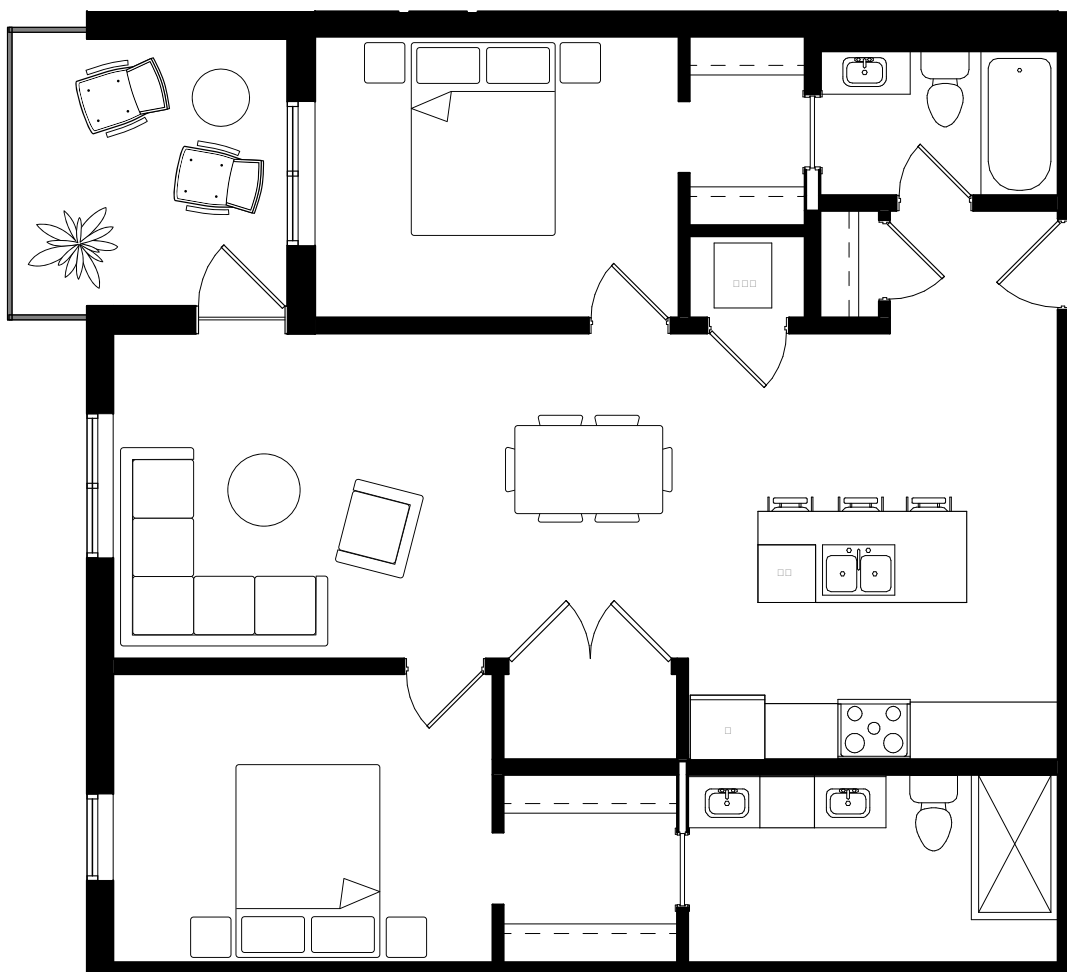
E. & O. E. This is not an offering for sale. Any such offering may only be made with a Disclosure Statement. The developer reserves the right to modify or change plans, specifications, features, materials and prices without notice and at the developer's sole discretion. While we strive for accuracy, all measurements are approximate and are based on the architectural plans. Renderings are conceptual and are intended as a general reference only.

SAVOY

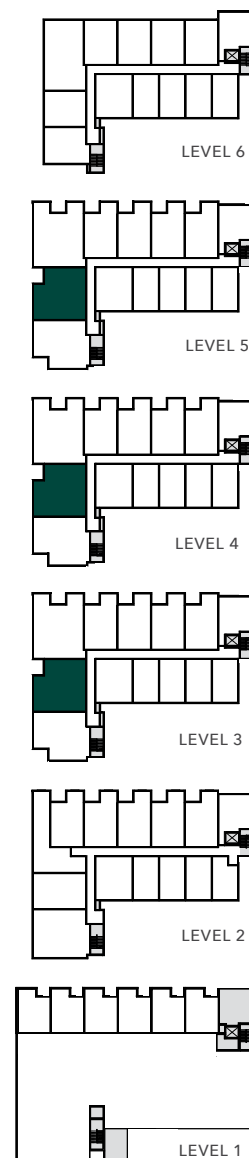
ON CLEMENT

PLAN D2

2 BED | 2 BATH
 INTERIOR: 1,030 SF
 EXTERIOR: 92 SF



CLEMENT AVE



LIVESAVOY.CA

✉ info@livesavoy.ca

Presentation Centre: Unit 101 - 620 Coronation Ave, Kelowna

FIFTH AVE
PROPERTIES

ace Project
Marketing
Group



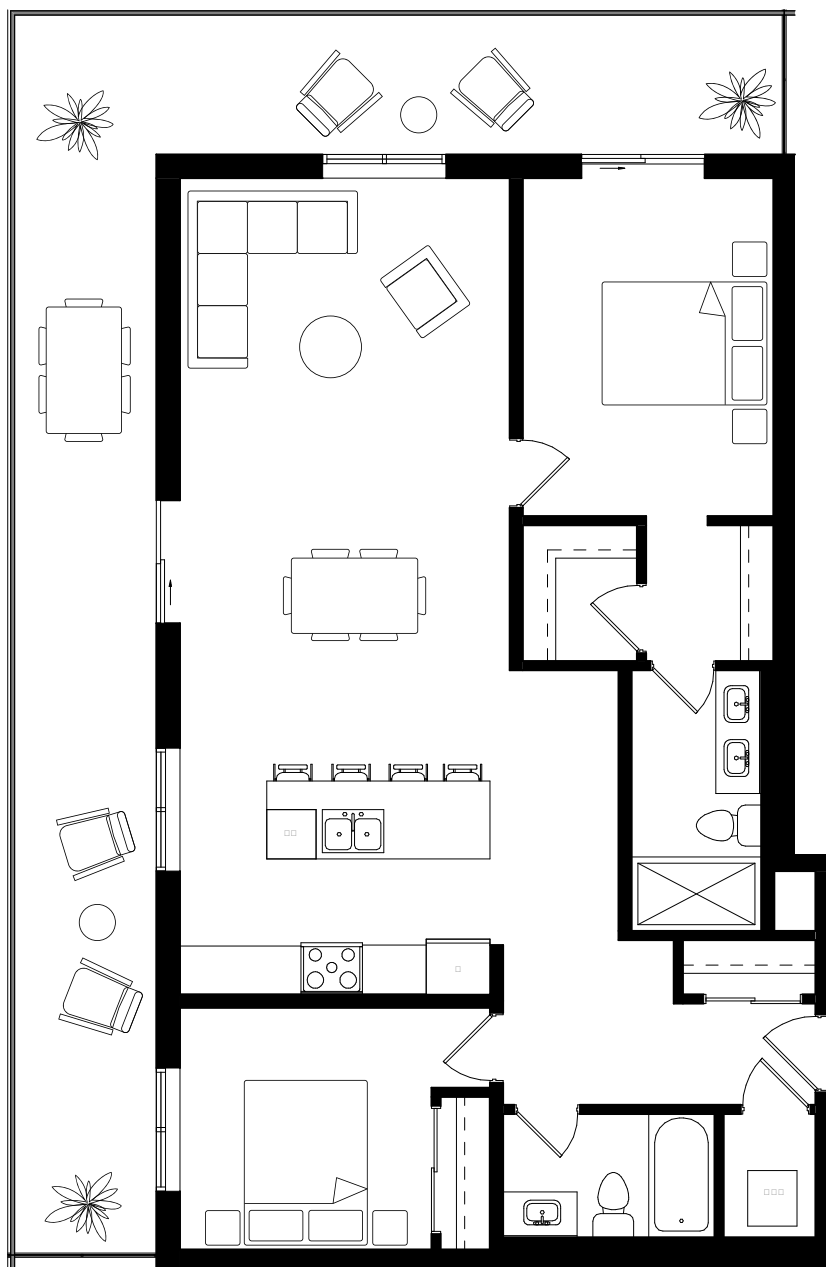
E. & O. E. This is not an offering for sale. Any such offering may only be made with a Disclosure Statement. The developer reserves the right to modify or change plans, specifications, features, materials and prices without notice and at the developer's sole discretion. While we strive for accuracy, all measurements are approximate and are based on the architectural plans. Renderings are conceptual and are intended as a general reference only.

SAVOY

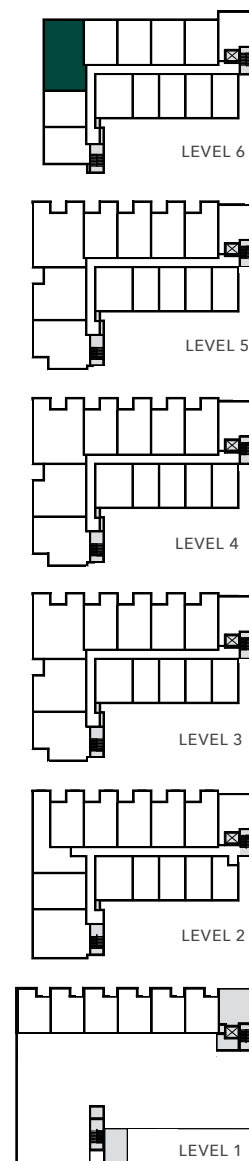
ON CLEMENT

PLAN D3

2 BED | 2 BATH
 INTERIOR: 1,120 SF
 EXTERIOR: 448 SF



CLEMENT AVE



LIVESAVOY.CA

✉ info@livesavoy.ca

Presentation Centre: Unit 101 - 620 Coronation Ave, Kelowna

FIFTH AVE
 PROPERTIES

ace Project
 Marketing
 Group



E. & O. E. This is not an offering for sale. Any such offering may only be made with a Disclosure Statement. The developer reserves the right to modify or change plans, specifications, features, materials and prices without notice and at the developer's sole discretion. While we strive for accuracy, all measurements are approximate and are based on the architectural plans. Renderings are conceptual and are intended as a general reference only.

SAVOY

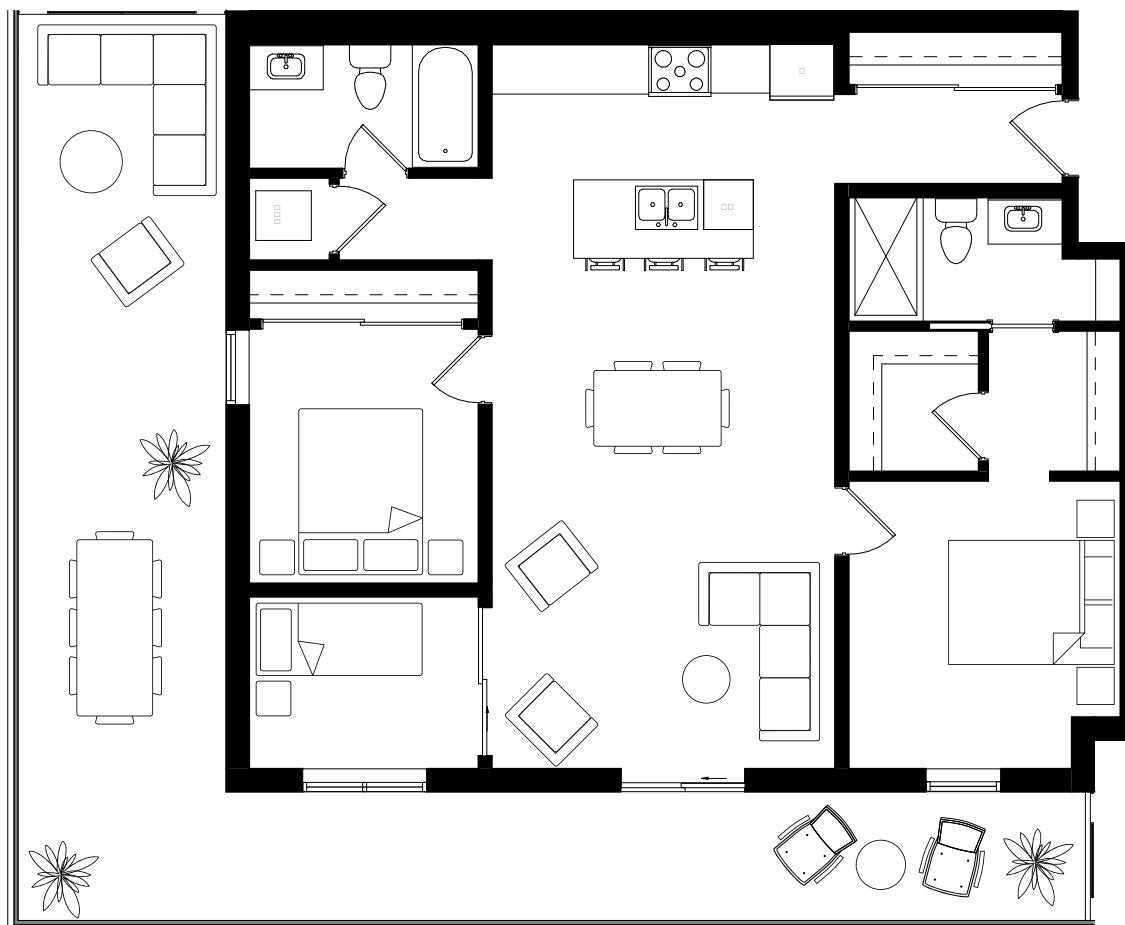
ON CLEMENT

PLAN E1

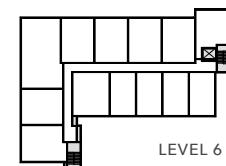
2 BED + DEN | 2 BATH

INTERIOR: 1,064 SF

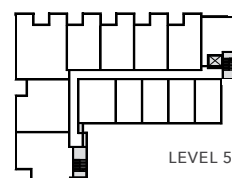
EXTERIOR: 519 SF



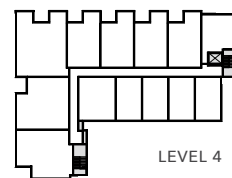
CLEMENT AVE



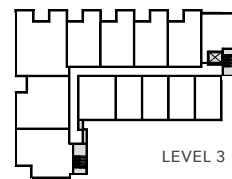
LEVEL 6



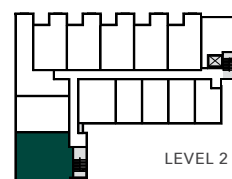
LEVEL 5



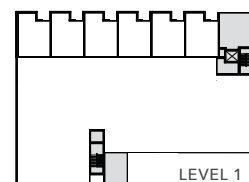
LEVEL 4



LEVEL 3



LEVEL 2



LEVEL 1

LIVESAVOY.CA

✉ info@livesavoy.ca

Presentation Centre: Unit 101 - 620 Coronation Ave, Kelowna

FIFTH AVE
PROPERTIES

ace Project
Marketing
Group



E. & O. E. This is not an offering for sale. Any such offering may only be made with a Disclosure Statement. The developer reserves the right to modify or change plans, specifications, features, materials and prices without notice and at the developer's sole discretion. While we strive for accuracy, all measurements are approximate and are based on the architectural plans. Renderings are conceptual and are intended as a general reference only.

SAVOY

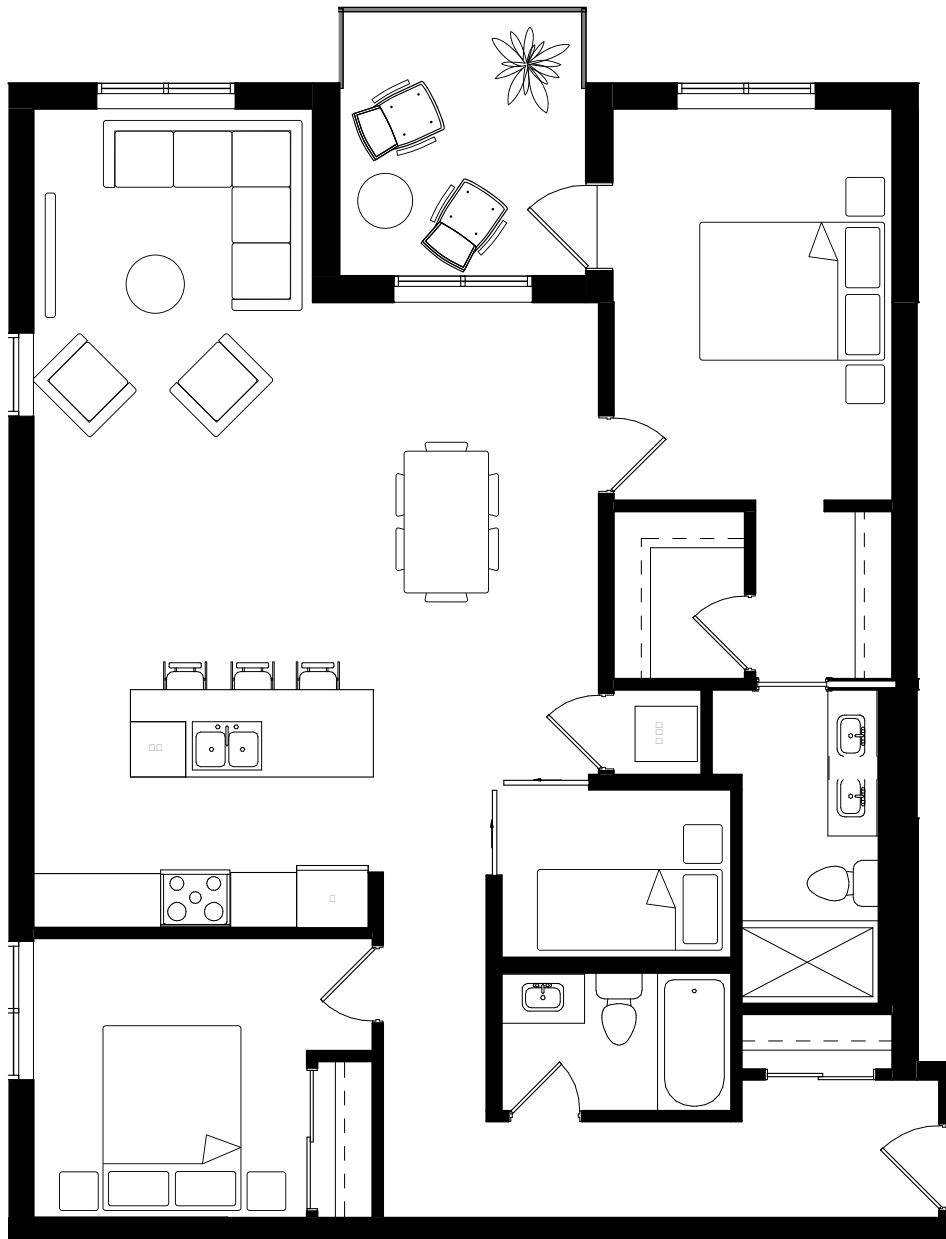
ON CLEMENT

PLAN E2

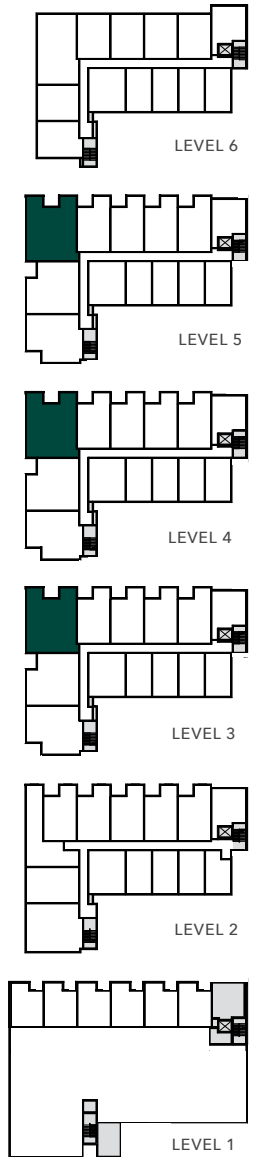
2 BED + DEN | 2 BATH

INTERIOR: 1,240 SF

EXTERIOR: 88 SF



CLEMENT AVE



LIVESAVOY.CA

✉ info@livesavoy.ca

Presentation Centre: Unit 101 - 620 Coronation Ave, Kelowna

FIFTH AVE
PROPERTIES

ace Project
Marketing
Group



E. & O. E. This is not an offering for sale. Any such offering may only be made with a Disclosure Statement. The developer reserves the right to modify or change plans, specifications, features, materials and prices without notice and at the developer's sole discretion. While we strive for accuracy, all measurements are approximate and are based on the architectural plans. Renderings are conceptual and are intended as a general reference only.

SAVOY

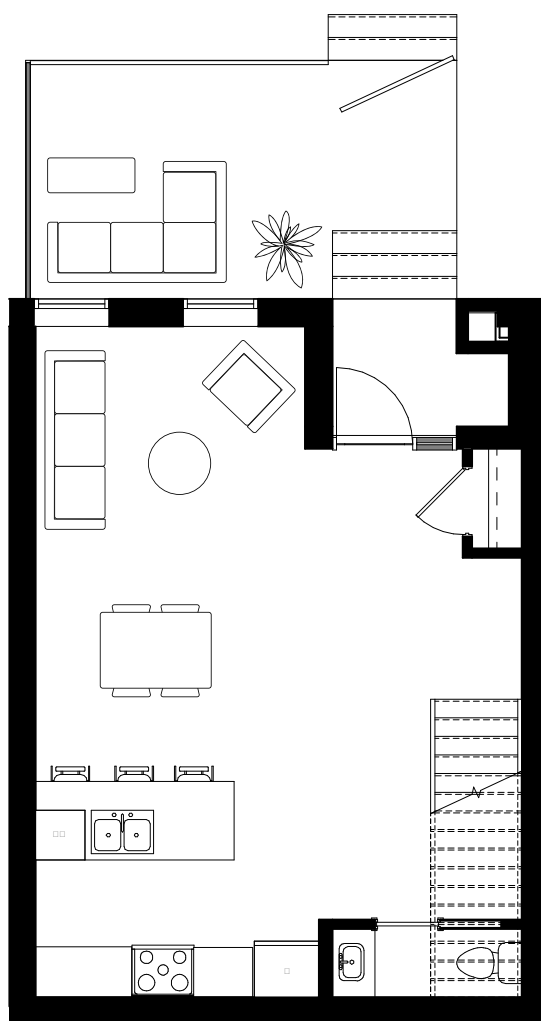
ON CLEMENT

PLAN T1

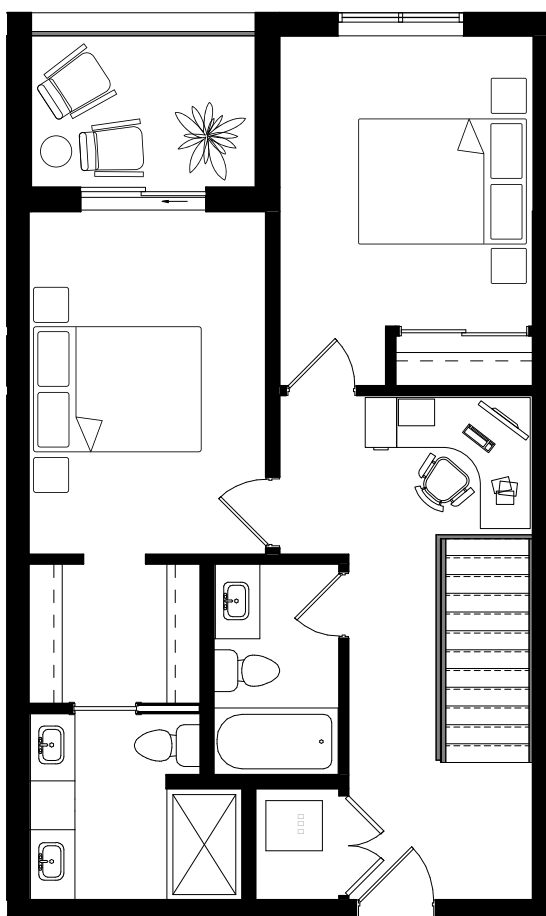
2 BED | 2.5 BATH

INTERIOR: MAIN 546 SF + UPPER 675 SF

EXTERIOR: MAIN 182 SF + UPPER 54 SF

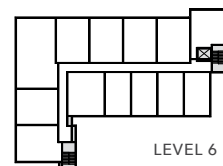


MAIN

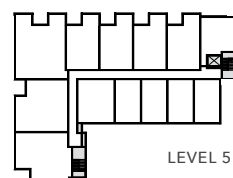


UPPER

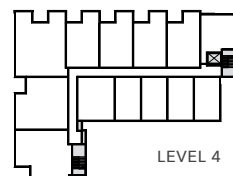
CLEMENT AVE



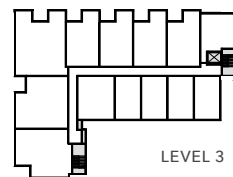
LEVEL 6



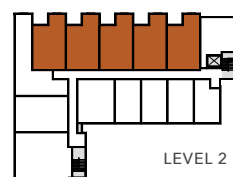
LEVEL 5



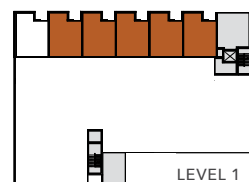
LEVEL 4



LEVEL 3



LEVEL 2



LEVEL 1

LIVESAVOY.CA

✉ info@livesavoy.ca

Presentation Centre: Unit 101 - 620 Coronation Ave, Kelowna

FIFTH
PROPERTIES

ace Project
Marketing
Group



E. & O. E. This is not an offering for sale. Any such offering may only be made with a Disclosure Statement. The developer reserves the right to modify or change plans, specifications, features, materials and prices without notice and at the developer's sole discretion. While we strive for accuracy, all measurements are approximate and are based on the architectural plans. Renderings are conceptual and are intended as a general reference only.

SAVOY

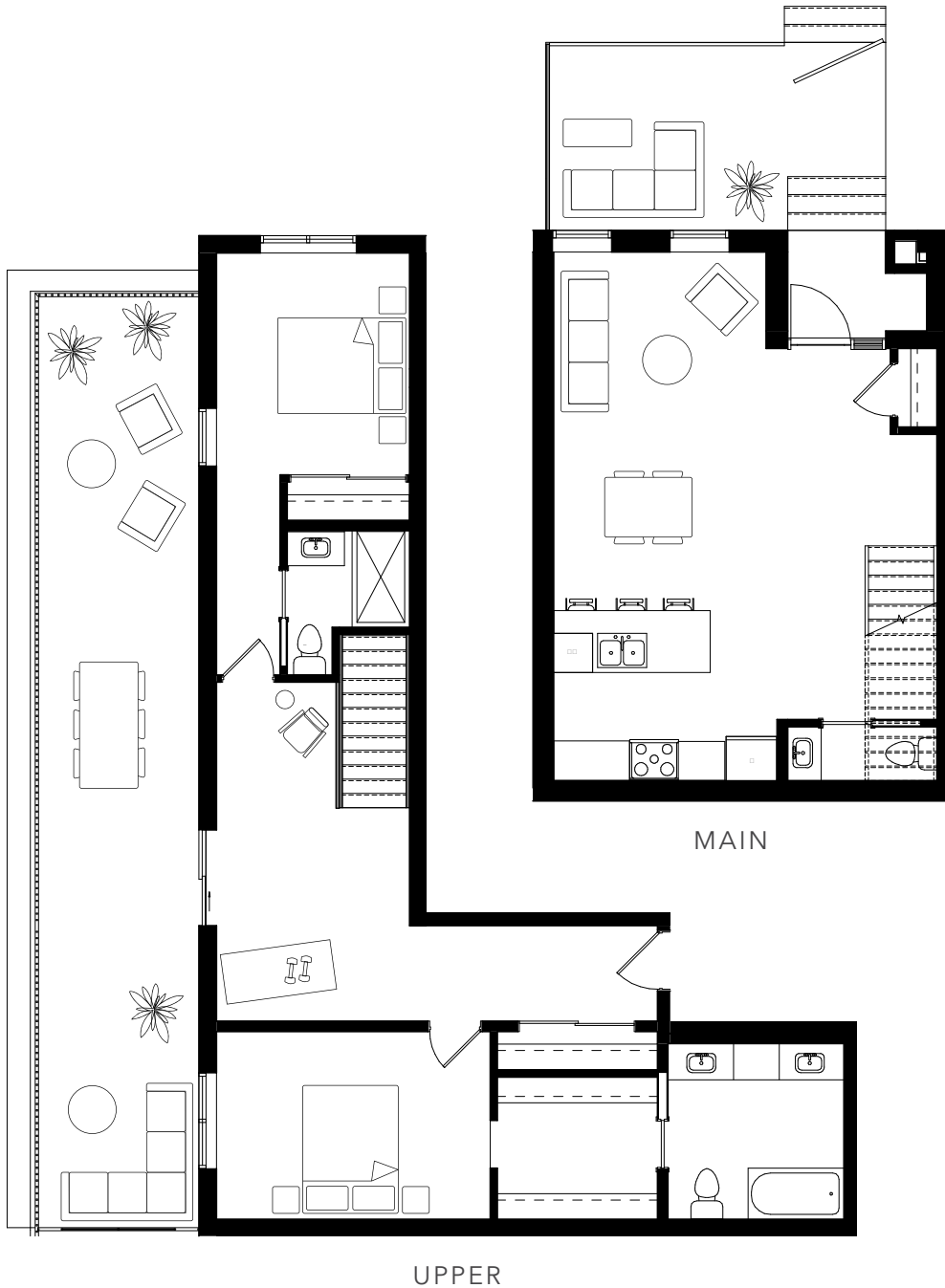
ON CLEMENT

PLAN T2

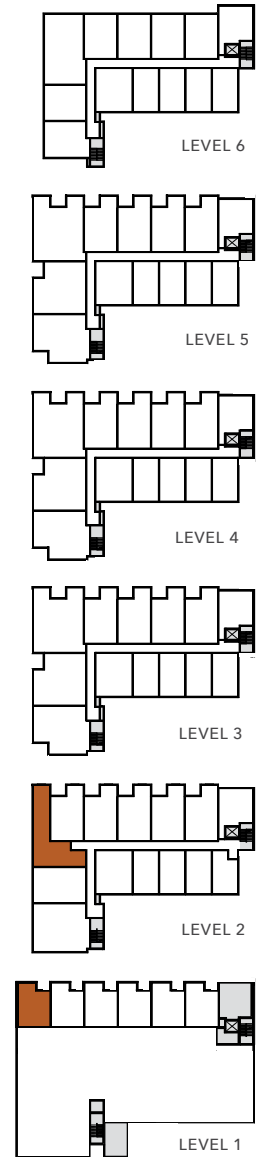
2 BED | 2.5 BATH

INTERIOR: MAIN 546 SF + UPPER 852 SF

EXTERIOR: MAIN 182 SF + UPPER 449 SF



CLEMENT AVE



LIVESAVOY.CA

✉ info@livesavoy.ca

Presentation Centre: Unit 101 - 620 Coronation Ave, Kelowna

FIFTH AVE
PROPERTIES

ace Project
Marketing
Group



E. & O. E. This is not an offering for sale. Any such offering may only be made with a Disclosure Statement. The developer reserves the right to modify or change plans, specifications, features, materials and prices without notice and at the developer's sole discretion. While we strive for accuracy, all measurements are approximate and are based on the architectural plans. Renderings are conceptual and are intended as a general reference only.